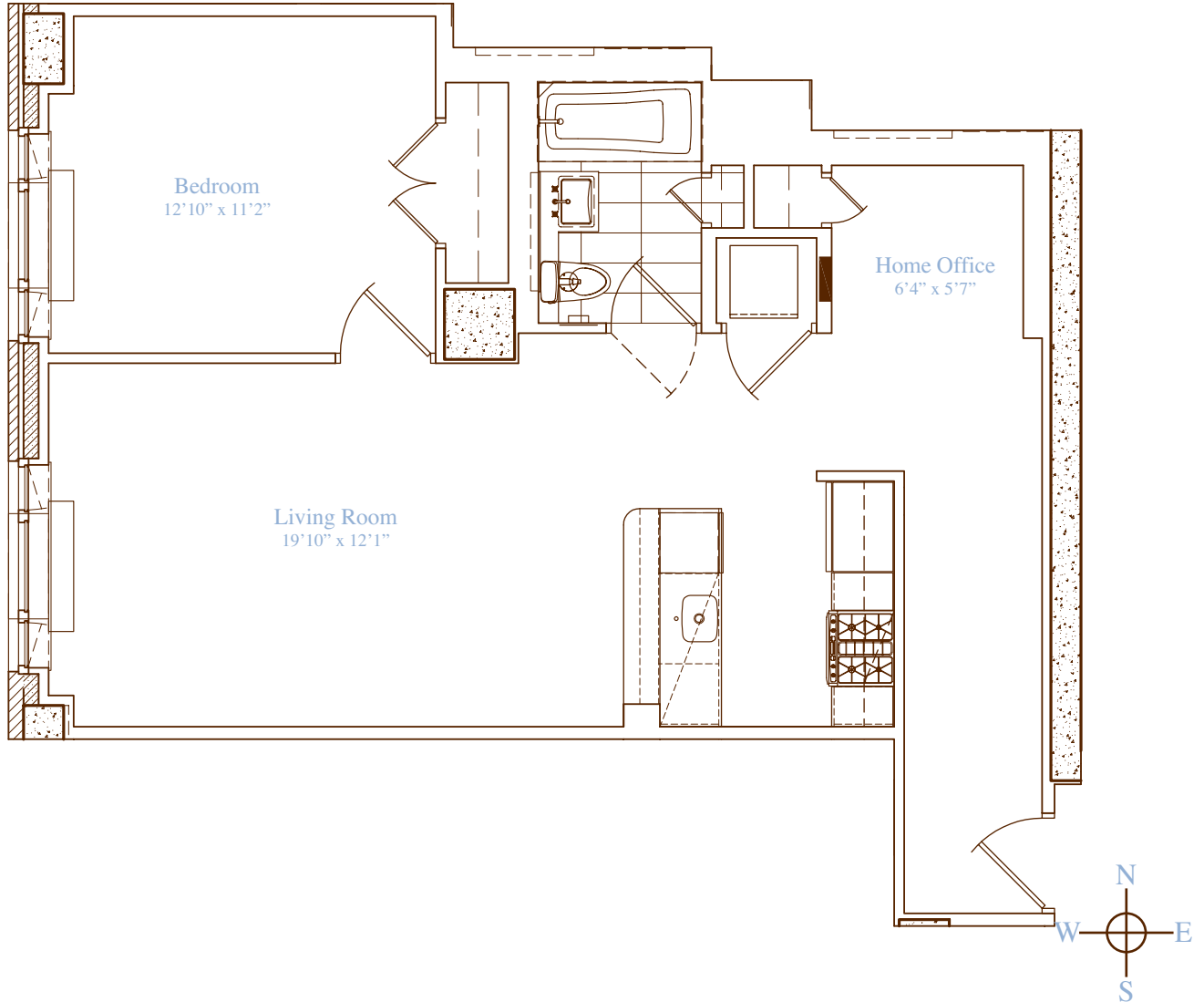


apartment: 2-14 O
approximate square footage: 829
bedrooms: 1
bathrooms: 1
closets: 4



finishes

- Lofted Ceilings
- Hardwood Walnut Floors

Allmilmö Kitchen

- GE ProfileStainless Steel Appliances
- Caesarstone Countertops
- Bianco Maple Cabinetry

Bathrooms

- Italian Porcelain Tile
- Kohler Fixtures
- Allmilmö Bianco Maple Cabinetry

Washer and Dryer Hookup

notes

229 West | **SESSANTA**
sessanta60.com | 212.204.0060