

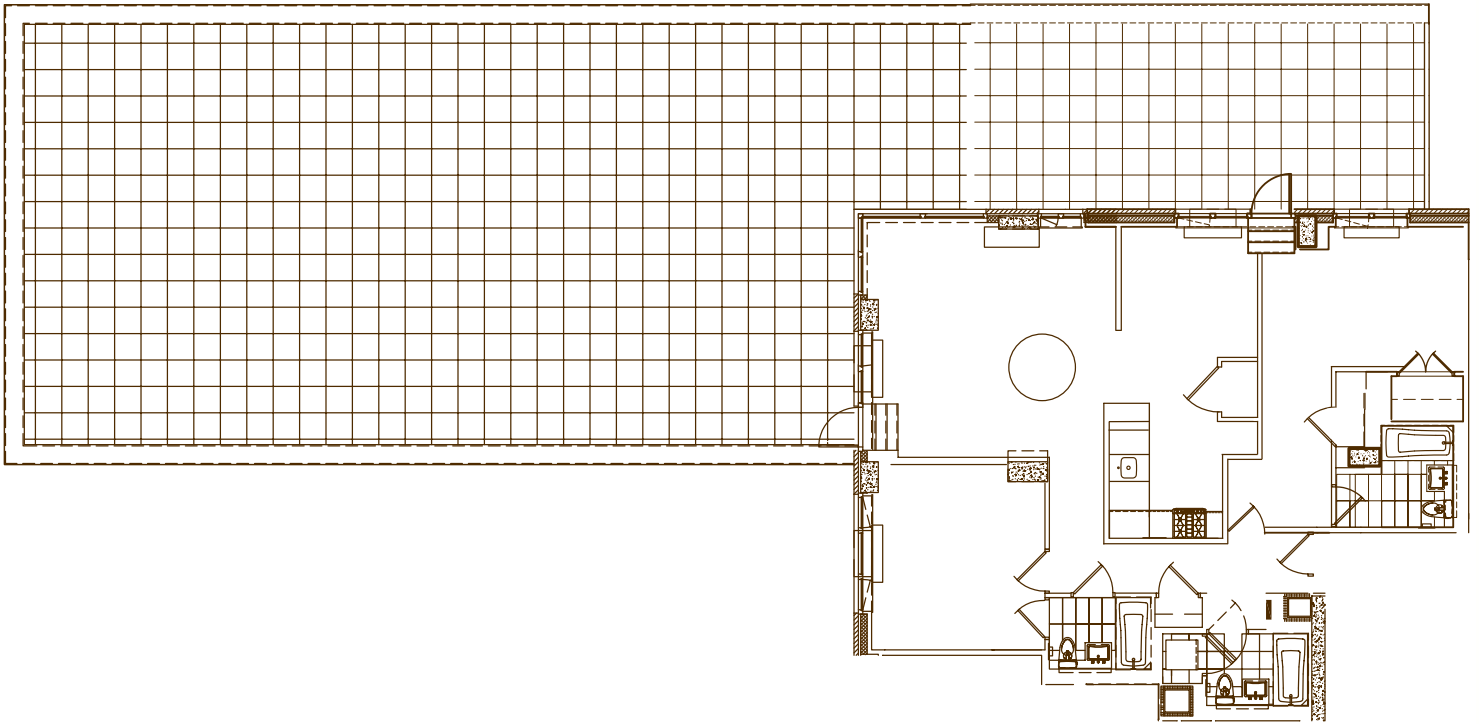
apartment: 8MN
approximate square footage: 1,501

bedrooms: 2

bathrooms: 2.5

closets: 5

terrace approximate square footage: 2,898 exclusively private



finishes

- Lofted Ceilings
- Hardwood Walnut Floors

Allmilmö Kitchen

- GE Profile Stainless Steel Appliances
- Caesarstone Countertops
- Bianco Maple Cabinetry

Bathrooms

- Italian Porcelain Tile
- Kohler Fixtures
- Allmilmö Bianco Maple Cabinetry

Washer and Dryer Hookup

notes

220 West | **SESSANTA**
sessanta60.com | 212.204.0060