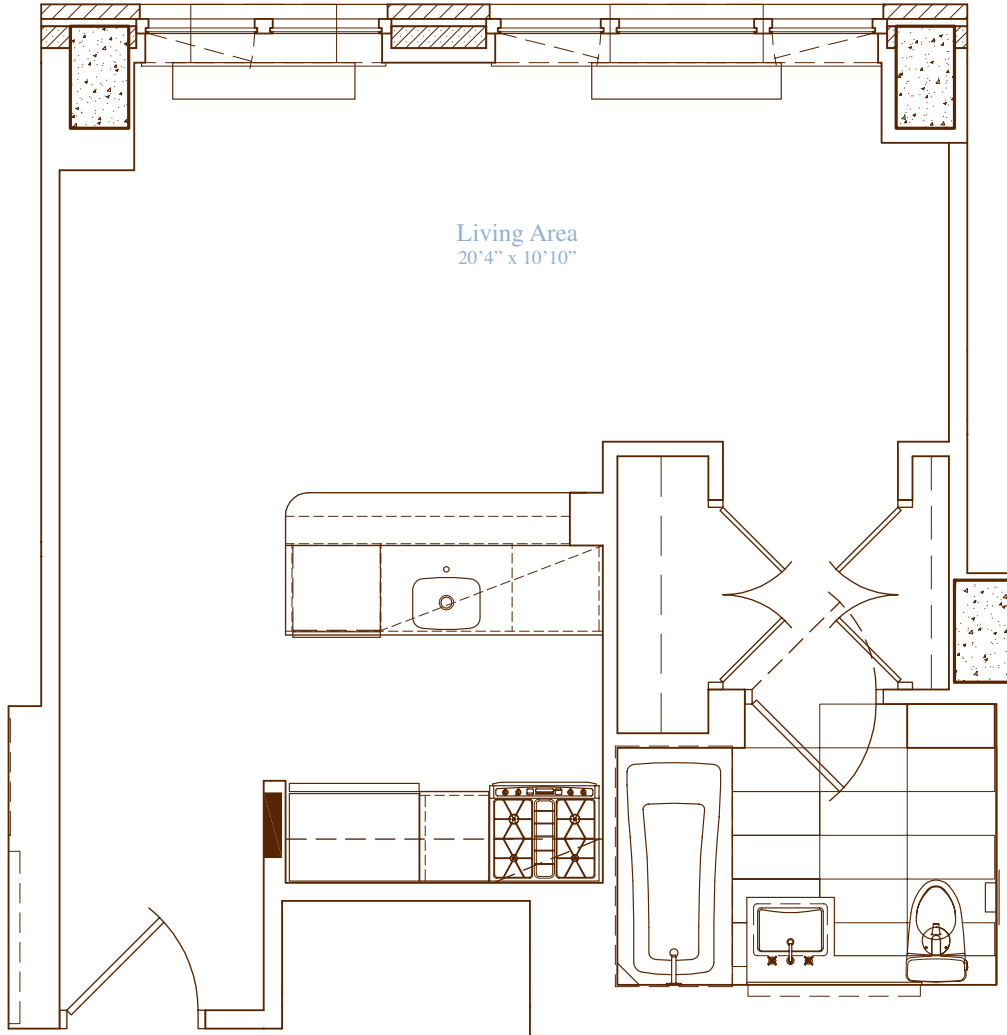


apartment: 9-26 T  
 approximate square footage: 471  
 bedrooms: Alcove Studio  
 bathrooms: 1  
 closets: 2



*finishes*

- Lofted Ceilings
- Hardwood Walnut Floors

Allmilmö Kitchen

- GE Profile Stainless Steel Appliances
- Caesarstone Countertops
- Bianco Maple Cabinetry

Bathrooms

- Italian Porcelain Tile
- Kohler Fixtures
- Allmilmö Bianco Maple Cabinetry

*notes*

---



---



---

229 West | **SESSANTA**  
 sessanta60.com | 212.204.0060