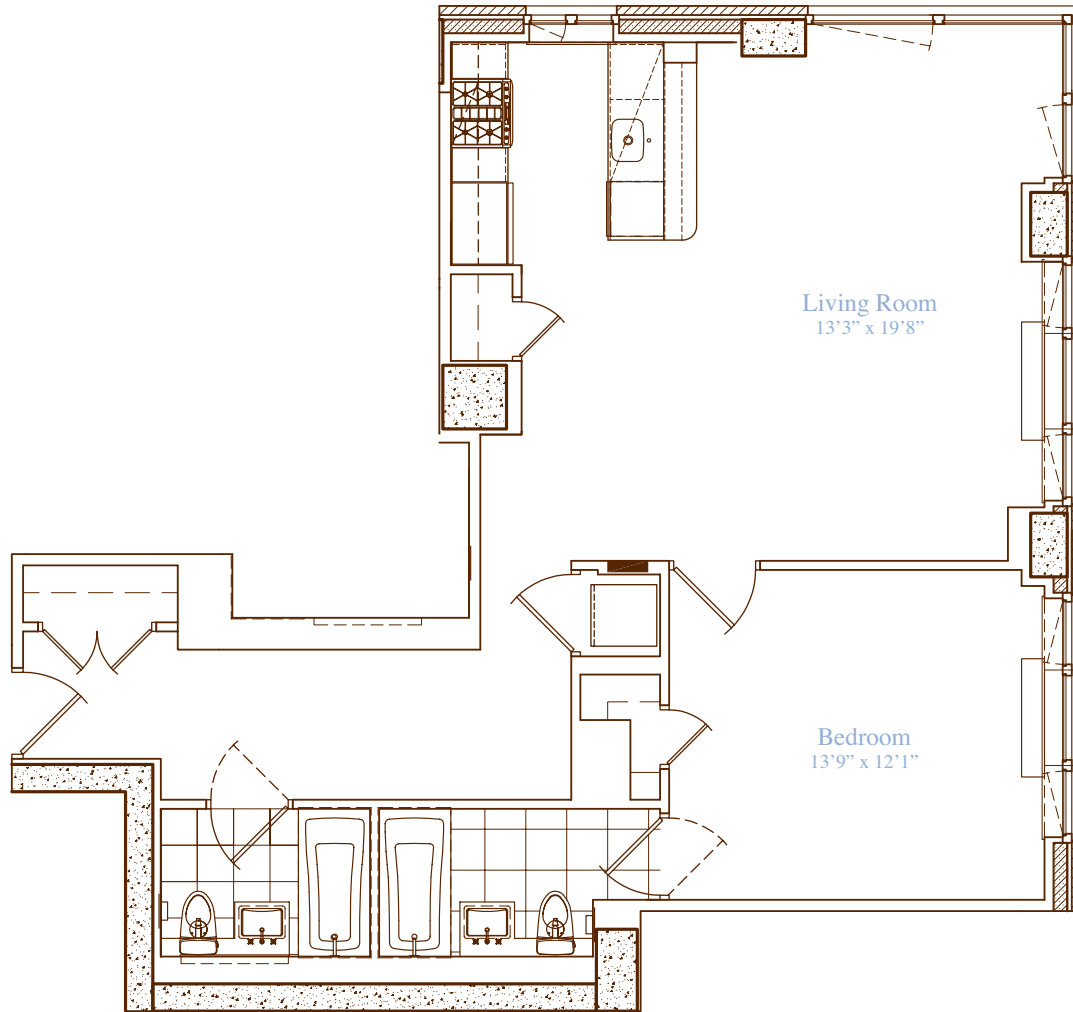


apartment: 8-26 S
approximate square footage: 982
bedrooms: 1
bathrooms: 2
closets: 1 walk-in, 3 traditional



finishes

- Lofted Ceilings
- Hardwood Walnut Floors

Allmilmö Kitchen

- GE Profile Stainless Steel Appliances
- Caesarstone Countertops
- Bianco Maple Cabinetry

Bathrooms

- Italian Porcelain Tile
- Kohler Fixtures
- Allmilmö Bianco Maple Cabinetry

Washer and Dryer Hookup

notes

229 West | **SESSANTA**
sessanta60.com | 212.204.0060